

ENGRAVING MACHINE | CUTTING MACHINE | MARKING MACHINE

PROFESSIONAL LASER EQUIPMENT MANUFACTURER

激光雕刻解决方案供应商



松立机械 走向世界
SONGLI MACHINERY GO TO THE WORLD



山东松立进出口有限公司

Shandong Songli import and Export Co., Ltd

地址：聊城市东昌府区嘉明开发区安居路1号

ADD:No.1 Anju Road, Jiaming Development Zone, Dongchangfu District, Liaocheng City

服务热线/TEL：400-877-0899 网址/http：www.songlicnc.com



扫一扫关注微信

山东松立进出口有限公司

SHANDONG SONGLI IMPORT AND EXPORT CO., LTD

COMPANY INTRODUCTION

公司简介

山东松立进出口有限公司是一家集生产、研发、销售于一体的现代化企业，自2015年10月成立以来，公司致力于激光数控设备技术的研究，生产出数控雕刻机、激光雕刻机、光纤打标机、激光切割机等多款产品。

产品适用于工艺礼品、服装、皮革、商标绣花、广告、印章、包装、制版、家具制造、刀模制造，电子电器等多个行业，产品远销到欧美等四十多个国家与地区，得到一致认可。

在公司发展壮大的同时，我们不断引进先进技术工艺与人才，一遍又一遍的改良设备，使我们的产品质量更可靠、性能更稳定、操作更加人性化，客户可以轻易掌握，节省出大量的时间与人力。

我们还配有专业的销售与售后团队，无论是售前与售后，全方位的为客户服务，对于客户的不同需求量身定制解决方案，充分展现我们的专业与诚意，从根本上解决客户在设备购买与使用中遇到的各种难题。

在此，我公司热情欢迎广大新老客户前来洽谈合作。

Shandong Songli Import & Export Co., Ltd. is a modern enterprise integrating production, R&D and sales. Since its establishment in October, 2015, the company has devoted itself to the research of laser numerical control equipment technology, producing CNC engraving machines, laser engraving machines, optical fiber marking machines, laser cutting machines and many other products.

The products are suitable for craft gifts, clothing, leather, trademark embroidery, advertising, seal, packaging, plate making, furniture manufacturing, knife mold manufacturing, electronic appliances and other industries. The products are exported to more than 40 countries and regions such as Europe and the United States, and have been unanimously recognized.

With the development of the company, we constantly introduce advanced technology and talents, and improve equipment over and over again, so that our products are more reliable in quality, more stable in performance, and more user-friendly in operation. Customers can easily grasp them and save a lot of time and manpower.

We also have a professional sales and after-sales team, both pre-sales and after-sales, all-round service for customers, customized solutions for different needs of customers, fully show our professionalism and sincerity, fundamentally solve the various problems encountered by customers in the purchase and use of equipment.

Here, our company warmly welcome new and old customers to discuss cooperation.

COMPANY HONOR

公司荣誉



我们充分考虑您的需求，从产品细节优化，节约成本、提高性价比、方案评估等全方面分析，为您创造最大价值的优质产品。我们不断超越自我，竭诚为全球客户提供专业和优质的服务

We give full consideration to your needs, and make all-round analysis from the aspects of product details optimization, cost saving, cost performance improvement, scheme evaluation, etc., to create high-quality products with the greatest value for you. We constantly surpass ourselves and wholeheartedly provide professional and high-quality services to customers all over the world.



CONTENTS



目录

激光雕刻切割机

Laser engraving and cutting machine

1325激光混切机/Laser mixed cutting machine	P01
1325激光雕刻机/Laser engraving machine	P03
1610自动送料裁剪机/Automatic feeding and cutting machine	P05
1390激光雕刻机/Laser engraving machine	P07
6090激光雕刻机/Laser engraving machine	P08
4060激光雕刻机/Laser engraving machine	P09
3020激光雕刻机/Laser engraving machine	P10

激光打标机

Laser marking machine

柜台式激光打标机/Cabinet laser marking machine	P11
二氧化碳激光打标机/Carbon dioxide laser marking machine	P13
便携式激光打标机/Portable laser marking machine	P15
分体式激光打标机/Split laser marking machine	P16
桌面一体式激光打标机/Desktop integrated laser marking machine	P17
飞行流水线打标机/Flight line marking machine	P18

LASER HYBRID CUTTING MACHINE

1325激光混切机



FUNCTIONAL FEATURES

功能特点

- 嵌入式电脑控制, DSP数字高速处理技术, 脱机操作, 人性化操作界面;
- 激光功率及雕刻切割速度变化随意控制, 切割精度高;
- 平稳的加减速控制软件技术, 动作迅捷平稳, 配合自动光衰补偿技术是不同切割部位达到理想效果;
- Embedded computer control, DSP digital high speed processing technology, offline operation;
- Laser power and engraving cutting speed can be controlled at will with high cutting precision;
- Smooth acceleration and deceleration control software technology, fast and stable action, with automatic light attenuation compensation technology is different cutting parts to achieve the ideal effect;

SCOPE OF APPLICATION

适用范围

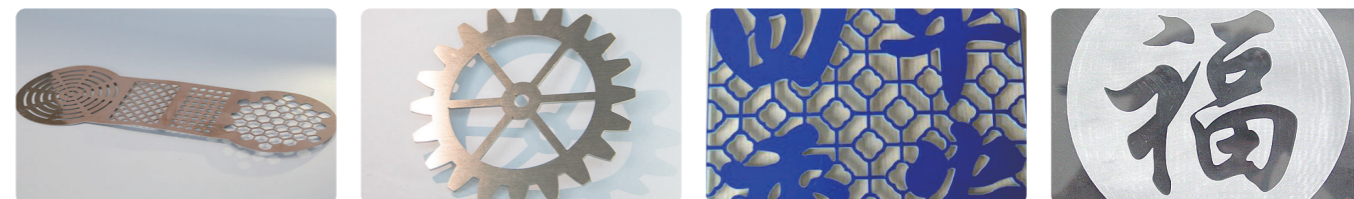
可以综合满足亚克力、木板等非金属以及不锈钢、碳钢、镀锌板、电解板等金属材料的加工需求, 尤其广泛应用于广告、水晶、塑料等非金属厚材料切割

It can comprehensively meet the processing needs of non-metallic materials such as acrylic, wood, stainless steel, carbon steel, galvanized sheet, electrolytic plate, etc., especially widely used in the cutting of non-metallic materials such as advertising, crystal, plastic, etc



SAMPLE DISPLAY

样品展示



TECHNICAL DATA

技术参数

机型 Model	1325 激光混切机 Laser mixed cutting machine
工作幅面 Processing area	1300mm*2500mm
激光功率 Laser power	80W-150W (可选 /Optional)
雕刻速度 Engraving speed	25-25000mm/min
切割速度 Cutting speed	50-10000mm/min
定位精度 Positioning accuracy	< 0.01mm
激光器类型 Laser type	CO2 封离式玻璃管激光器 Sealed off glass tube laser
工作温度 Working temperature	0℃-45℃
工作湿度 Working humidity	5%-95%

LASER ENGRAVING MACHINE

1325激光雕刻机



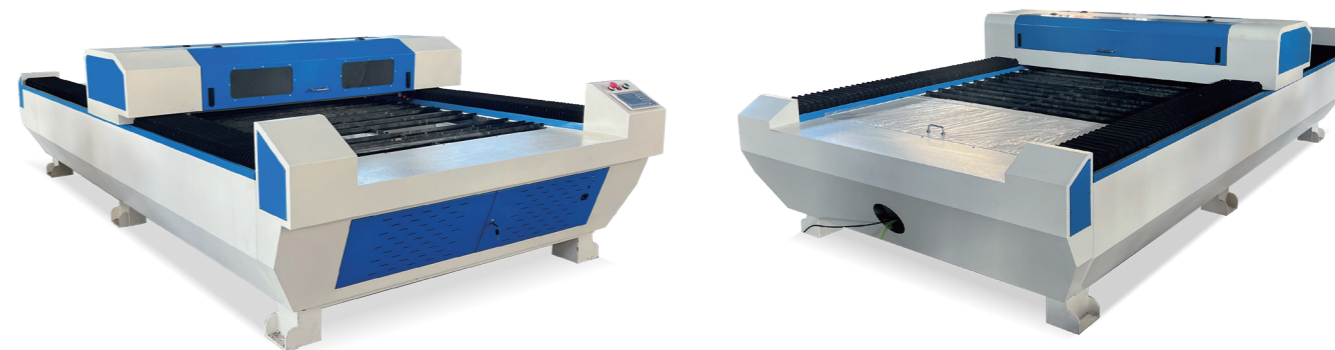
FUNCTIONAL FEATURES

功能特点

- 大幅面数控编程, 可对幅面很大的整版切割, 无需开模, 经济省时;
- 激光切割速度快, 切口没有机械应力, 光滑平整无剪切毛刺;
- 加工精度高, 重复性好, 不损伤材料表面;
- Large-scale NC programming, which can cut the whole page with a large format, without mold opening, saving time and economy;
- The laser cutting speed is fast, the incision has no mechanical stress, and it is smooth and flat without shearing burr;
- High machining precision, good repeatability and no damage to the surface of materials;

PRODUCT DISPLAY

产品展示



SCOPE OF APPLICATION

适用范围

适用材料: 亚克力、PVC板、木制品、水晶、橡胶、塑料、双色板、纸张、皮革、瓷砖等;

适用行业: 广告行业、装潢装饰业、服装行业、皮革行业、鞋帽行业、模型行业、工艺礼品行业、电子电器等行业;

Material: acrylic, PVC board, wood products, crystal, rubber, plastic, two-color board, paper, leather, ceramic tile, etc.

Application: advertising industry, decoration industry, clothing industry, leather industry, shoes and hats industry, model industry, arts and crafts industry, electronic appliances and other industries.



TECHNICAL DATA

技术参数

机型 Model	1325 激光雕刻机 Laser engraving machine
工作幅面 Processing area	1300mm*2500mm
激光功率 Laser power	80W/100W/130W/150W (可选 /Optional)
雕刻速度 Engraving speed	1-600mm/s
切割厚度 Cutting speed	0-15mm
定位精度 Positioning accuracy	<0.01mm
成型文字 Formed text	汉字 2*2mm/ 字母 1*1mm
激光器类型 Laser type	CO2 封离式玻璃管激光器 Sealed off glass tube laser
设备电源 Equipment power supply	AC220V 50Hz/60Hz

AUTOMATIC FEEDING CUTTING MACHINE

1610自动送料裁剪机



PRODUCT DISPLAY

产品展示



SCOPE OF APPLICATION

适用范围

适用材料: 适用于毛毡、木版画、服装、电脑绣花、剪纸、皮革、绣花等;

适用行业: 适用于服装业、电脑绣花裁剪业、布制玩具业、纸质品业模具业等需要大幅面开料、裁切的行业;

Material: Suitable for felt, woodcut, clothing, computer embroidery, paper cutting, leather, embroidery, etc.

Application: It is suitable for industries such as garment industry, computer embroidery and cutting industry, cloth toys industry, paper products industry and mould industry that need large-scale cutting and cutting.



FUNCTIONAL FEATURES

功能特点

- 针对软性材料而生产的一款机器, 大幅面切割, 无损切割, 多激光头, 互移功能, CCD功能;
- 高质量的激光管固定器, 保护激光管不受损坏. 切割缝隙小、无焦边或焦黄现象, 自动锁边功能, 对切割毛毡、皮革和布料行业我们更专业
- A machine for soft materials, with large-format cutting, nondestructive cutting, multiple laser heads, mutual moving function and CCD function;
- High-quality laser tube fixer protects the laser tube from damage. The cutting gap is small, there is no burnt edge or scorch phenomenon, and the automatic edge locking function makes us more professional in cutting felt, leather and cloth industries.

TECHNICAL DATA

技术参数

机型 Model	1610 自动送料机 Automatic feeder
工作幅面 Processing area	1600mm*1000mm
激光功率 Laser power	80W/100W/130W/150W (可选 /Optional)
雕刻速度 Engraving speed	800mm/s
切割速度 Cutting speed	0-400mm/s
定位精度 Positioning accuracy	< 0.01mm
平台 Platform	自动送料网带 Automatic feeding mesh belt
冷却方式 Cooling mode	水泵或恒温水箱及保护系统 Water pump or thermostatic water tank
额定电压 Rated voltage	110/220V ± 10% 50/60Hz

LASER ENGRAVING MACHINE

1390激光雕刻机



TECHNICAL DATA 技术参数

机型 Model	1390 激光雕刻机 Laser engraving machine
工作幅面 Processing area	1300mm*900mm
激光功率 Laser power	80W/100W/130W/150W (可选 /Optional)
雕刻速度 Engraving speed	25-25000mm/min
切割速度 Cutting speed	50-10000mm/min
定位精度 Positioning accuracy	≤0.01mm
平台 Platform	蜂窝状 / 铝刀状 (升降可选) Honeycomb / aluminum knife (optional)
总功率 Total power	<1200W
额定电压 Rated voltage	110/220V ± 10% 50/60Hz

LASER ENGRAVING MACHINE

6090激光雕刻机



FUNCTIONAL FEATURES 功能特点

- 高反射率反射镜片, 聚焦镜片光斑稳定且直径小, 雕刻切割效果边缘光滑;
- 机器平台一键升降, 噪音小、自动缓冲性能强适合各种不同厚度板材;
- High reflectivity lens, stable light spot and small diameter of focusing lens, smooth edge of carving and cutting effect;
- The machine platform can be lifted and lowered by one key, with low noise and strong automatic cushioning performance, which is suitable for all kinds of plates of different thickness;

SAMPLE DISPLAY 样品展示



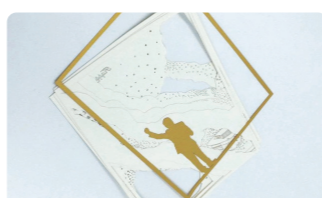
LASER ENGRAVING MACHINE

4060激光雕刻机



SAMPLE DISPLAY

样品展示



LASER ENGRAVING MACHINE

3020激光雕刻机



SCOPE OF APPLICATION

适用范围

主要用于雕刻非金属材料的印章，如牛角印、木头印、红塑印、有机玻璃印、原子印、水晶印、玉石等

适用于小面积的工艺品加工，在双色板、木板、竹片、有机玻璃、布匹上刻各种各样的图形和文字

It is mainly used for carving seals of nonmetallic materials, such as horn seal, wood seal, red plastic seal, plexiglass seal, atomic seal, crystal seal, jade seal, etc.

It is suitable for small-area handicraft processing, and can engrave various figures and characters on bicolor boards, wooden boards, bamboo pieces, plexiglass and cloth pieces.

TECHNICAL DATA

技术参数

机型 Model	4060 激光雕刻机 Laser engraving machine
工作幅面 Processing area	600mm*400mm
激光功率 Laser power	50W/60W/80W
工作速度 Working speed	0-6000mm/min
定位精度 Positioning accuracy	≤0.01mm

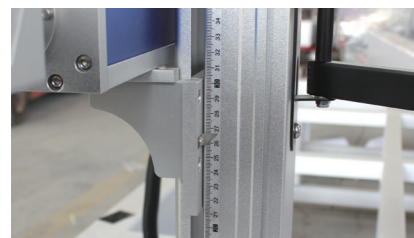
TECHNICAL DATA

技术参数

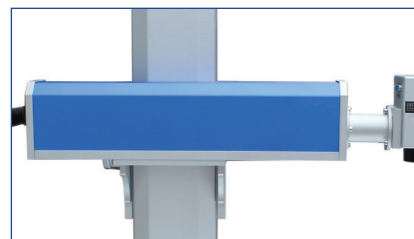
机型 Model	3020 激光雕刻机 Laser engraving machine
激光功率 Laser power	40W/50W
最大雕刻面积 Maximum engraving area	200mm*300mm
最大刻章面积 Maximum engraving area	200mm*100mm
工作电压 Working voltage	AC220 ± 10% 50Hz / AC110 ± 10% 60Hz

DESKTOP LASER MARKING MACHINE

柜台式激光打标机



Scale scale
刻度标尺



Fiber laser
光纤激光器



FUNCTIONAL FEATURES

功能特点

- 采用高品质的激光器, 可靠性高, 使用寿命长, 光源光斑质量好, 光功率输出密度均匀、稳定, 无漏光、抗高反等特点;
- 高速扫描振镜, 体积小、速度快、稳定性好、控制精度高;
- 全封闭激光腔体设计, 防尘无污染;
- Adopt high-quality laser, which has the characteristics of high reliability, long service life, good light spot quality, uniform and stable optical power output density, no light leakage, high reflection resistance, etc.
- High-speed scanning galvanometer, small size, high speed, good stability and good control accuracy;
- Fully enclosed laser cavity design, dustproof and pollution-free;

SCOPE OF APPLICATION

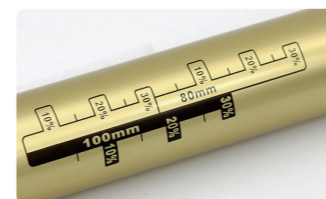
适用范围

电气、工程和电子部件、组件; 手机保护套、电池、键盘; 建筑材料、PVC管材; 珠宝、戒指、指甲、手镯、眼镜、钟表和工艺品; 汽车零部件、仪表、切削工具; 军用产品、五金配件; 食品、饮料、医药行业等

Electrical, engineering and electronic parts and assemblies; Mobile phone case, battery, keyboard; Materials, PVC pipes; Jewelry, rings, nails, bracelets, glasses, clocks and handicrafts; Auto parts, instruments and cutting tools; Military products and hardware accessories; Food, beverage and pharmaceutical industries, etc.

SAMPLE DISPLAY

样品展示



TECHNICAL DATA

技术参数

机型 Model	台式激光打标机 Desktop laser marking machine
打标范围 Marking scope	110mm*110mm
激光功率 laser power	10W/20W/30W
光速质量 m ³ Light speed mass	<1.6
最小线宽 Minimum line width	0.1mm
激光波长 Laser wavelength	1064nm ± 3
最小成型字符 Minimum formed character	0.01mm
最小光板 Minimum light plate	0.005mm
支持图片格式 Support image format	所有 CorelDraw/AUTOCAD 可识别的文件格式 Recognizable file format

CO₂ DESKTOP MARKING MACHINE

二氧化碳台式打标机



Control switch
控制开关



CO₂ Laser
二氧化碳激光器



FUNCTIONAL FEATURES

功能特点

- 采用CO₂射频激光器,具有光斑质量好、光功率输出稳定、无漏光、抗高反等特点;
- 打标内容长度、行数不限,内容可设置为文本、矢量图、条形码、二维码、日期批次、序列号等格式;
- 光路系统采用双层密封结构,防止粉尘进入光路腔体,提高核心器件的使用寿命使用效率;
- Using CO₂ RF laser, it has the characteristics of good spot quality, stable optical power output, no light leakage, anti-high reflection and so on;
- There is no limit to the length and number of lines of the marking content, and the content can be set in formats such as text, vector graphics, barcodes, QR codes, date batches, serial numbers, etc.;
- The optical path system adopts a double-layer sealing structure to prevent dust from entering the optical path cavity and improve the service life and efficiency of core components;

SCOPE OF APPLICATION

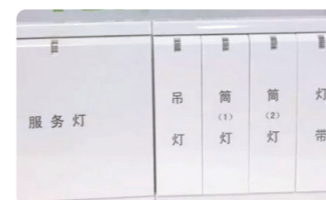
适用范围

主要有竹木制品、纸张、布料、皮革、有机玻璃、环氧树脂、丙烯酸树脂、聚酯树脂等非金属材料;
广泛应用于工艺礼品、广告标牌、模型制作、食品包装、电子元器件、医药包装、印刷制版、外壳铭牌等;

Mainly non-metallic materials such as bamboo and wood products, paper, cloth, leather, plexiglass, epoxy resin, acrylic resin, polyester resin;
Widely used in craft gifts, advertising signs, model making, food packaging, electronic components, pharmaceutical packaging, printing plate making, shell nameplates, etc.;

SAMPLE DISPLAY

样品展示



TECHNICAL DATA

技术参数

机型 Model	二氧化碳台式打标机 CO ₂ Desktop marking machine
打标范围 Marking scope	110mm*110mm
激光功率 laser power	10W/20W/30W/50W
打标速度 Marking speed	≤10000mm/s
光速质量 m ³ Light speed mass	<1.6
最小线宽 Minimum line width	0.1mm
最小成型字符 Minimum formed character	0.01mm
最小光板 Minimum light plate	0.005mm
支持图片格式 Support image format	所有 CorelDraw/AUTOCAD 可识别的文件格式 Recognizable file format

PORTABLE LASER MARKING MACHINE

便携式激光打标机

FUNCTIONAL FEATURES

功能特点

- 集成设计紧凑, 体积小, 易于携带安放;
- 使用寿命可达到10万工作小时, 机器免维护, 整机耗率低;
- The integrated design is compact, the volume is small, and it is easy to carry and place;
- The service life can reach 100,000 working hours, the machine is maintenance-free, and the consumption rate of the whole machine is low;



SAMPLE DISPLAY

样品展示

适用于大多数金属材料, 如金, 银, 不锈钢, 黄铜, 铝, 钢, 铁等;

Suitable for most metal materials, such as gold, silver, stainless steel, brass, aluminum, steel, iron, etc;



TECHNICAL DATA

技术参数

机型 Model	便携式激光打标机 Portable laser marking machine
工作幅面 Processing area	110mm*110mm
激光功率 Laser power	20W/30W/50W
最小字符 Minimum character	0.1mm
总功率 Total power	<500W

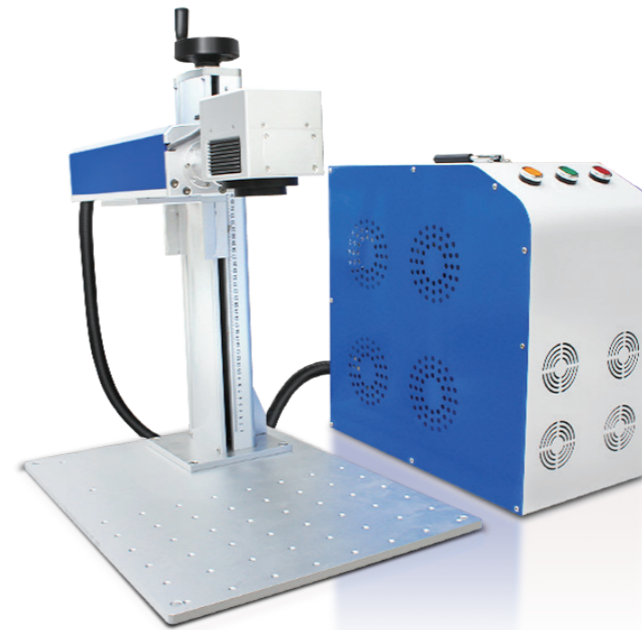
SPLIT LASER MARKING MACHINE

分体式激光打标机

FUNCTIONAL FEATURES

功能特点

- 扫描精度高、响应灵敏、防震设计, 聚焦精准;
- 标准定位孔可快速定位, 位置可调实现多种组合;
- High scanning accuracy, sensitive response, shock-proof design, accurate focusing;
- Standard positioning holes can be quickly positioned, and the position can be adjusted to achieve various combinations;



SAMPLE DISPLAY 样品展示

应用于机械零件加工、仪器打标、五金工具、日用品、汽车零件、电子元件等行业;

It is used in mechanical parts processing, instrument marking, hardware tools, daily necessities, auto parts, electronic components and other industries



TECHNICAL DATA

技术参数

机型 Model	分体式激光打标机 Split laser marking machine
工作幅面 Processing area	110mm*110mm
激光功率 Laser power	20W/30W/50W
最小字符 Minimum character	0.1mm
光束质量 Beam quality	<1.4

DESKTOP INTEGRATED

桌面一体式打标机

FUNCTIONAL FEATURES

功能特点

- 人性化的升降手柄, 简化调节刻度的复杂度, 能精确的定位和精度;
- 场镜扫描系统采用新技术, 新材料、新工艺, 透光率高, 打标效果好;
- The humanized lifting handle simplifies the complexity of adjusting the scale, and enables precise positioning and precision;
- The field mirror scanning system adopts new technology, new material and new process, with high light transmittance and good marking effect;



SAMPLE DISPLAY

样品展示

适用于大多数金属材料, 如金, 银, 不锈钢, 黄铜, 铝, 钢, 铁等;

Suitable for most metal materials, such as gold, silver, stainless steel, brass, aluminum, steel, iron, etc;



TECHNICAL DATA

技术参数

机型 Model	便携式激光打标机 Portable laser marking machine
工作幅面 Processing area	110mm*110mm
激光功率 Laser power	20W/30W/50W
最小字符 Minimum character	0.1mm
打标速度 Marking speed	≤6000mm/s

FLYING LINE MARKING MACHINE

飞行流水线打标机



FUNCTIONAL FEATURES 功能特点

- 采用CO2射频激光器和镜头组高速扫描振镜、工业电脑, 功耗小, 升降架可以进行上下、前后、俯仰角度调节, 结构紧凑, 性能稳定
- Using CO2 RF laser and lens group, high-speed scanning galvanometer, industrial computer, low power consumption, lifting frame can adjust up and down, front and back, pitch angle, compact structure, stable performance



TECHNICAL DATA

技术参数

机型 Model	飞行流水线打标机 Flight line marking machine
激光功率 Laser power	20W/30W/50W/100W
打标速度 Marking speed	≤10000mm/s
重复定位精度 Repeat positioning accuracy	±0.03mm
工作电压 working voltage	220V ± 10 % 50 Hz / 110V ±10% 60Hz